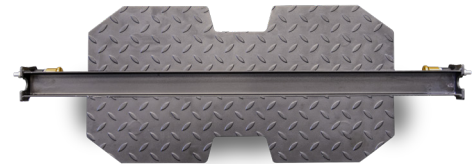




Included Attachments



Optional Vertical Leg Press

PRODUCT HIGHLIGHTS:

The Legion X3 Spatha Pro All-In-One Strength Trainer combines Olympic plate and pin loaded stack weights, a counter balanced SMith, and dual adjustable pulleys with (2) x 220 lb weight stacks.

Additional Features:

Multi-Grip Chin Up Bar, Dip Attachment, Lat Pulldown Seat, Low Row Footplate, Freeweight J-Hooks, Safety Spotter Arms, Suspension Training Anchor, Olympic Plate and Bar Storage, an attached Land Mine with T-Bar Row Handle, Band Pegs, and Leverage Handles. All Standard.

Included Accessories:

48" Lat Pulldown Bar, 48" Double Ended Training Bar, 24" Straight Bar, Nylon Stirrup Handles, Triceps Rope, Ankle Straps, Olympic Spring and Lockjaw Collars.

Options: Vertical Leg Press Attachment

Specifications

- 11-Guage Rectangular Tubing
- 2:1 Cable Ratio

Dimensions:

- 91" (W) x 62" (D) x 89" (H)

Product Weight:

- 1,217 lbs / 553kg Unit Weight
- 1,255 lbs / 616kg Shipping Weight

Residential Warranty*: Applies to equipment used in a home setting only by the occupants.

Lifetime: Frame

5 Years: Cables, Pulleys, Bushings, Bearings & Guide Rods.

3 Mths: All other parts not specifically mentioned above.

Commercial Warranty*: Applies to equipment used in a commercial facility with less than 8-hours use per day.

10 Years: Frame

1 Year: Cables, Pulleys, Bushings, Bearings & Guide Rods;

3 Mths: All other parts not specifically mentioned above.

*Warranties apply to manufacturer defects only and are non-transferrable.